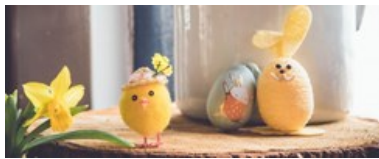


VOLUNTARY AND COMMUNITY NEWSLETTER

14 April 2022 | Issue 5



News



Recycle more... this Easter

Planning for a low waste Easter? From recycling Easter egg packaging to reducing food waste, we have lots of tips and advice to help. [Discover Easter Recycling Tips](#).

Keeping NWL clean and green with the Zero Litter Campaign

Zero Litter Campaign
2022 - 2024



An [action plan](#) has been created to help us reach our ambitious target of zero litter in just two years.

Some key actions we'll focus on include participation in local and national campaigns, looking at litter bin usage and technology options, CCTV camera use in hotspot areas and working in partnership with councils across the whole of Leicestershire.

Help For Ukraine

NWLDC has a dedicated webpage for the crisis in Ukraine. To find out about

- Homes For Ukraine Scheme
- Ukraine Family Scheme
- Donating aid
- Information and help for those settling in the UK from Ukraine

This information can be found by visiting our page [here](#).

Covid-19

The NHS is offering coronavirus (COVID-19) vaccines to children aged 5 to 11 years.



Experts have advised that parents of all children aged 5 to 11 years should be offered the chance to have their child vaccinated. Vaccination is particularly important for children who have health conditions that put them at high risk from COVID-19, as the benefits are greater.

Children will be offered the Pfizer COVID-19 vaccine. Each vaccine is a third of the dose of vaccine that is given to older children and adults. Parents will receive information offering them the chance to make an appointment for their child to be vaccinated.

Funding

Queen's Platinum Jubilee Grant

This grant has now closed. We have had a fantastic response which has seen over 40 applications submitted from community organisations across the district.

There will be many fantastic ways to celebrate The Queens Platinum Jubilee.



We have a new community grants poster. [Click here](#) to download a copy and please share.



The Community Focus Team

The Community Focus Team

Emma Trahearn
Community Focus Team
Leader

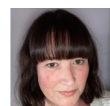


Community Focus Officers

Zara Barnes
Coalville and surrounding
areas



Catherine Ridgway
Ashby, Measham & Moira



Gillian Squires
Northern Parishes



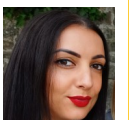
Jessica Lloyd-Davies
Community Focus Support
Officer



Helen Crouch
Food Poverty Officer



Amy Flint, Administration
Support Officer



Send in your events, news and community opportunities to community.focus@nwleicestershire.gov.uk

Events



Easter Multi Sports Sessions

Ellistown Playing Fields
South Street Park
Wednesday 13th April 2-3pm
Wednesday 20th April 10-11am

Suitable for ages 8-13yrs
£1 per session
(Free for Children on FSM's)

To reserve your place or for more information please contact:
katie.hayes@nwleicestershire.gov.uk

ACTIVE TOGETHER | Leicestershire County Council | North West Leicestershire District Council

VIRTUAL JOBS FAIR

Explore the opportunities between 10am, Tuesday 19 April and midnight on Monday 2 May 2022.

Companies with opportunities include:
Swagson International Limited | Prudential Nursing and Care | Roberts Coaches | Work Live Leicestershire | Affinity Trust | ASD | Home Instead | Bilingual Day Nursery, Ashby | NWLDC | Bosworth Homecare | Marks and Spencer (Castle Donington) | Village Homecare | Ramstad | Leicestershire Cricket Club | Birmingham 2022 | Primary PPA Cover | Palfox | Enrich | Thom Baker Construction | Witnack & John the Baptist CE Primary School | DOW | Pilgrims UK | Loughborough College | DHL | Care at Home | The Agency | CT Skills | Frankie and Benny's | Anchor Forstercare | Accept Recruitment | Absolute Care | Clulow Bookkeeping and Forensic Services | Insomnia Coffee

Apprenticeship opportunities are also available
www.leicesteremploymenthub.co.uk/nwldc/

North West Leicestershire | SHB College Group | Leicestershire Employment Hub

Is your community prepared for Flooding?



Do you have a Community Flood Warden? It is recommended that every parish should have at least 2-3 wardens, not just those who have a large river, brook or watercourse running through their area. To find out what areas are at risk within your parish we recommend you visit the Environment Agency Flood maps for surface water and river flooding. See link below <https://flood-warning-information.service.gov.uk/long-term-flood-risk/map>

Training sessions for anyone wishing to learn more about becoming a Community Flood Warden are available. See further details below

- 18:00—20:00, 26 May 2022, North West Leicestershire

To reserve your space please contact emergency.management@leics.gov.uk or telephone 0116 3056101.

Events



Measham Pop Up Employment Hub Are you at a career crossroads?

Take the next step towards your future, speak to Work and Skills Leicestershire at Measham Library.

- Thursday May 5
- Thursday July 7
- From 10am-12pm

To contact Work & Skills Leicestershire, call their personal advisors on 0800 988 0308. You can also book a face-to-face appointment at a local Employment Hub. Find Work & Skills online at leicestershire.gov.uk/work-and-skills.



Family FOREST BATHING
improving your wellbeing

Multi-sensory, slow walks through nature. Different activities using each of the senses allow you to connect with nature in a way you haven't before. The short walks are fun, interactive and hands on. A great way to meet new people and get into the great outdoors.

Wild Minds forest bathing sessions
For all the family to enjoy!
Six week programme
30 April, 11am at Moira Furnace, DE12 6AT
7 May, 11am at YHA, Moira DE12 6BA
14 May, 11am at Moira Furnace, DE12 6AT
21 May, 11am at YHA, Moira DE12 6BA
28 May, 11am at Moira Furnace, DE12 6AT
4 June, 11am at YHA, Moira DE12 6BA
£2 per person, per session

Booking is required contact georgia.james@nwleicestershire.gov.uk or 01530 454735

MOIRA FURNACE

North West Leicestershire | ACTIVE TOGETHER | Wild Minds | Leicestershire County Council | West Leicestershire Clinical Commissioning Group | Leicestershire County and Rutland | Leicestershire Partnership NHS Foundation Trust



FRIENDS OF ASHBY BATH GROUNDS

Friends of Ashby
BATH GROUNDS

Our local group works to protect and improve the Bath Grounds here in Ashby, as a free, public access park and recreational facility for the benefit of the whole community.

Our work includes supporting enhancement of the area, the prevention of building on any part of the Bath Grounds and ensuring continuous community ownership of the Bath Grounds.

We are looking for new Friends to join us, it costs just £5 for the year to be a member. It's quick and easy to join and your support will help us to meet our goals of preserving and improving Ashby's "Jewel in the Crown."

Details can be found at bathgroundsfriends.com

Increasing our membership is the best way to achieve the goals of the group, as a member you will receive updates on our progress and all the latest news on this wonderful facility.

Thank you for helping

Funding

Warburtons Community Grants provides small grants up to £400 to support charitable organisations towards broader activities which improve Health, Place or Skills for families in their community. [Find out more.](#)



Leicestershire County Council's SHIRE Community Grants programme for 2022-23 is now open for applications.

The SHIRE Community Grant programme enables VCSE (Voluntary, Community & Social Enterprise) sector organisations to deliver community-based projects, services and activities which help to improve the lives of vulnerable people in Leicestershire. Further information, is available on the Leicestershire Communities [website](#).

Local Policing



Officers are warning elderly residents to be vigilant when withdrawing money from cash machines.

It follows a small number of thefts from victims who have typically been approached mid-transaction and distracted or pushed to one side.

The victim's account has then had the maximum withdrawal taken in some cases. Officers are investigating the incidents but are issuing the following advice:

- Be aware of people standing too close or trying to distract you while using the machine.
- If someone is too close to you, get your card out without withdrawing any money and walk away.
- If possible use a cash machine located inside a bank's premises.
- Report suspicious activity to the police on 101.